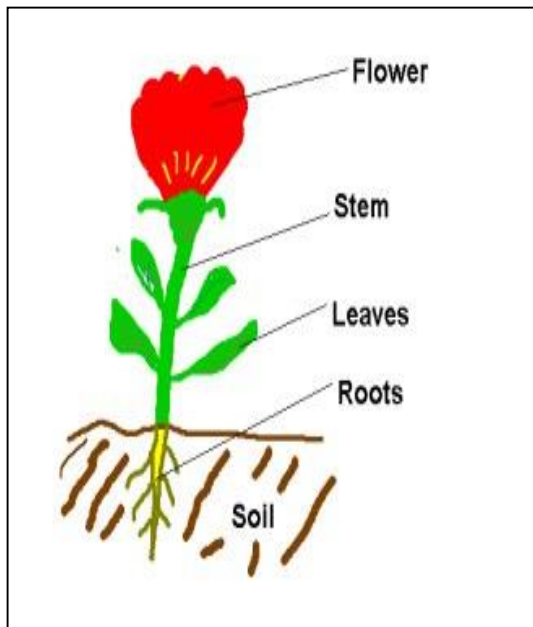


Plants	
A plant	A living thing that usually grows from the ground.
The main parts of a plant	<ul style="list-style-type: none"> • Flowers • Leaves • Stem • Roots
5 common plants you could try to identify	<ul style="list-style-type: none"> • Tulips • Daffodils • Roses • Bluebells • Foxgloves



Science - Plants
YEAR 1



Vocabulary	Definition
Flower	Reproductive part of the plant.
Stem	The main structure that supports the plant and the leaves.
Leaves	An organ of a plant.
Roots	The root holds the plant in the ground and keep it upright. They take water and food from the soil and they also store food for the plant.
Soil	The loose upper layer of the Earth's surface where plants grow.
Seed	The part of a flowering plant that can develop into a new plant.
Evergreen	A plant or tree that keeps its leaves all year.
Deciduous	A tree that loses its leaves in Autumn and grows new ones in Spring.

Tree	
The main parts of a tree	<ul style="list-style-type: none"> • Crown • Leaves • Twigs • Branches • Trunk • Roots

Things you could do:
Grow your own flowers or trees and record changes.
Survey visiting insects to a selection of plants.
Find ways to prove that plants are alive.
Changing the colours of flowers using different coloured water to feed.

