



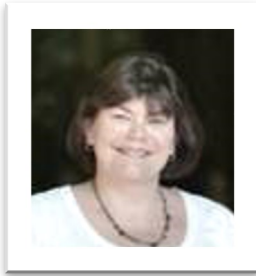
Neil Townley

Chair of Full Governing Body (FGB)

Co-opted Governor

and Chair of Improvement, Inclusion & Curriculum Sub-Committee

My son attended St George's and I work for the Department of Health.



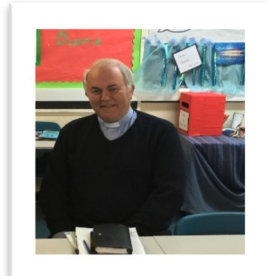
Nicola Symes

Vice Chair Full Governing Body (FGB)

Co-opted Governor

and Chair of Finance & Buildings Sub-Committee

I work in the NHS, with a focus on the planning, development and improvement of services. My son is currently in Year 1.



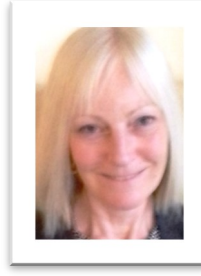
Rev. Edward Wright

Ex-Officio Governor

Member of Worship & Ethos Sub-Committee

I have been Reverend at St George's Church for 3 years.

I am fond of steam rallies, fireworks and other activities I enjoy include tennis and gardening.



Susan Smith

Foundation Governor

Member of Worship & Ethos Sub-Committee

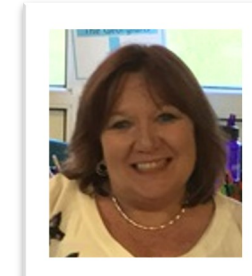
I work in education, enjoy supporting the school and attend St George's Church.

Awaiting Photo

Nick Castell

Parent Governor

Member of Improvement, Inclusion & Curriculum Sub-Committee



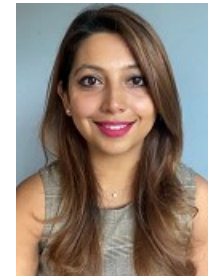
Sandy Chapman

Foundation Governor

Child Protection Governor

Chair of Worship & Ethos Sub-Committee

I work in education for a special needs school, a past parent of the school and the church warden at St George's Church.



Salwa Tunio

Parent Governor

Wellbeing Governor

Member of Improvement, Inclusion & Curriculum Sub-Committee

I am a full time working mother of 2 children who attend St Georges. I'm very excited about working closely with our school to continue giving our children a fun, safe and academically rewarding experience.



Sue Wood

Co-Opted Governor

Member of Improvement, Inclusion & Curriculum Sub-Committee

I am a retired ex-Headteacher, adore being a grandparent and a part of St George's school life.



Hadley Watling

Co-opted Governor

Member of Finance & Buildings Sub-Committee

I am a father of four, three of which currently attend St George's and a Chartered Accountant.



Libby Rye

Ex-Officio Governor

Headteacher



Matt Jones

Staff Governor

Deputy Headteacher